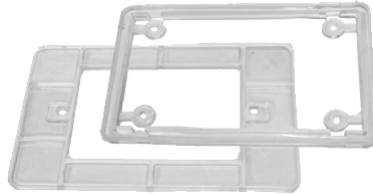
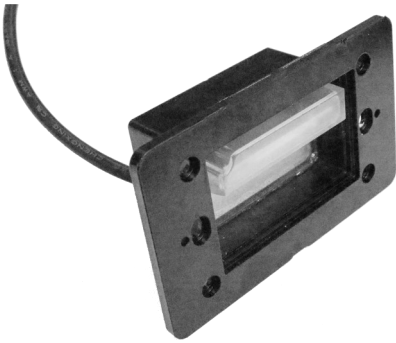
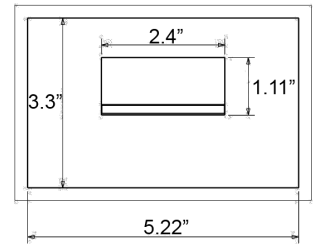
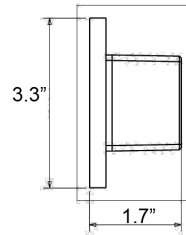


DIMENSIONS:

FITS: STANDARD SINGLE-GANG JUNCTION BOX



Includes PVC Gasket Set for



SLEA-120V-50K
SLEA-120V-30K

SINGLE-GANG STEP LIGHT ENGINES FOR RECESSED TRIMS

Ideal for recessed step lighting, walkway and path lighting, courtyard lighting and deck lighting. Optional face plates sold separately.

ELECTRICAL SPECIFICATIONS:

- Voltage: 120VAC
- Wattage: 2W
- Efficacy: 43LM/W

HOUSING SPECIFICATIONS:

- PVC housing
- PVC Gasket set for j-box or weatherproof box mounting
- 1FT. STP-2 18AWG lead wire
- Operating temperature: -40°F ~ 104°F
- IP rating: IP67, Wet Locations

CERTIFICATIONS:



Applies to trims too

| MODEL | WATTS | VOLTAGE | LUMENS | COLOR TEMP |
|---------------|-------|---------|--------|------------|
| SLEA-120V-50K | 2W | 120VAC | 86LM | 5000K |
| SLEA-120V-30K | 2W | 120VAC | 86LM | 3000K |

LIGHTING SPECIFICATIONS:

- Integrated COB LED Bar (Weatherproof) with built-in driver
- Lens: PC Lens
- Total lumens: 86LM
- Color temperature: 3000K / 5000K

WARRANTY: 1 years

INSTALLATION:

single-gang J-Box or Weatherproof Box (Not included)



SLEA-120V-50K
SLEA-120V-30K

**SINGLE-GANG STEP LIGHT ENGINES FOR
 RECESSED TRIMS**

FACE PLATES: Precision Cast Aluminum

| MODEL | WATTS | VOLTAGE | LUMENS | COLOR TEMP |
|---------------|-------|---------|--------|------------|
| SLEA-120V-50K | 2W | 120VAC | 86LM | 5000K |
| SLEA-12V0-30K | 2W | 120VAC | 86LM | 3000K |



SLT-A-BN (BRUSHED NICKEL FINISH)



SLT-A-ORB—OIL RUBBED BRONZE FINISH



SLT-A-AZ—ANTIQU BRONZE FINISH



SLT-A-WH—WHITE FINISH

